

RAKU SPA Introduction



Wristband

- Instead of a purse
- Can open the wardrobe, restaurant in order, vending machine, the facilities at a touch can be used
- Please take care of your wristband , do not lose

※If lost, need to pay 1000 yen in compensation



Locker cabinet

- You can use the locker of the same number as indicated on your wristband.
- Please do not leave the locker while putting a key into the keyhole, and make sure to lock it at any time.



Bathrobe suit content

- After Leaving,please take bathrobe suit content return the basket of bathrobe suit content place



Shoe box area

- Take care of key after you leaving

※If lost, need to pay 1000 yen in compensation

Notes into the RAKU SPA

- Please no outside food and drinks
- Please don't check in before leaving
- Children can not be mixed bathing above 120cm

The following is prohibited in the RAKU SPA

- With a tattoo (including sealed tatoo)
- Members or related members of gangster organization
- The drunk
- Harass other guests or behavior harm

※ Adult(More high school students)·Children(4 years to Pupils)·Free for children under three years old

Ticket prices	Weekdays		Holidays	
	Adult	Children	Adult	Children
normal	1,480 (Excluding tax) Yen	450 (Excluding tax) Yen	1,680 (Excluding tax) Yen	500 (Excluding tax) Yen
3% off FUROCA Member Cash·bank card Payment	1,436 (Excluding tax) Yen	437 (Excluding tax) Yen	1,630 (Excluding tax) Yen	485 (Excluding tax) Yen
5% off FUROCA Member rechargeable card Payment	1,406 (Excluding tax) Yen	428 (Excluding tax) Yen	1,596 (Excluding tax) Yen	475 (Excluding tax) Yen

Member discount

furoca Member

- The Furoca membership card can be repeated using, SO EASY!!

It's can be repeat the recharge using, and with the value function of the membership card, as long as the prior charge to the card fees, settle accounts do not need to use a cash , easy check in Recharge amount from 3000 yen (cash only)



- You can enjoy discounts up to 3%-5%

When show your membership card at the checkout will be able to enjoy the maximum 3% discount Membership card payment using the maximum amount you can enjoy 5% discount
※Some of the goods do not enjoy the discount, the amount of decimal preferential reduction



- Various other membership service

Such as coupons, latest events and other information through the members-only website, or mail in the form of check. Allowing you to enjoy more affordable and fun Happy Hour in RAKU SPA



The Furoca membership card can be repeated use and charge a top-up cards with the function of paying, Become a Furoca member to enjoy more discount

The payment of Membership: 100yen
The payment of renew: 100yen
Valid term: From day on 1 year membership

※FUROCA Membership valid is 1 year from joining days or update days
※Prepaid card balance is valid for 2 year from the date of last recharge date

Methods for membership

Read the right of the QRcode or directly send an empty E-mail to 3252@fucaca.gokurakuyu.ne.jp



step 1

3252@furoca.gokurakuyu.ne.jp



A moment later received the registration web site, please click the URL and fill in the information in accordance with the requirements

step 2



After receive, it can be complete web site registration

step 3



Go to the store front to show [login complete] screen, for formal membership procedures, can receive the membership card

step 4

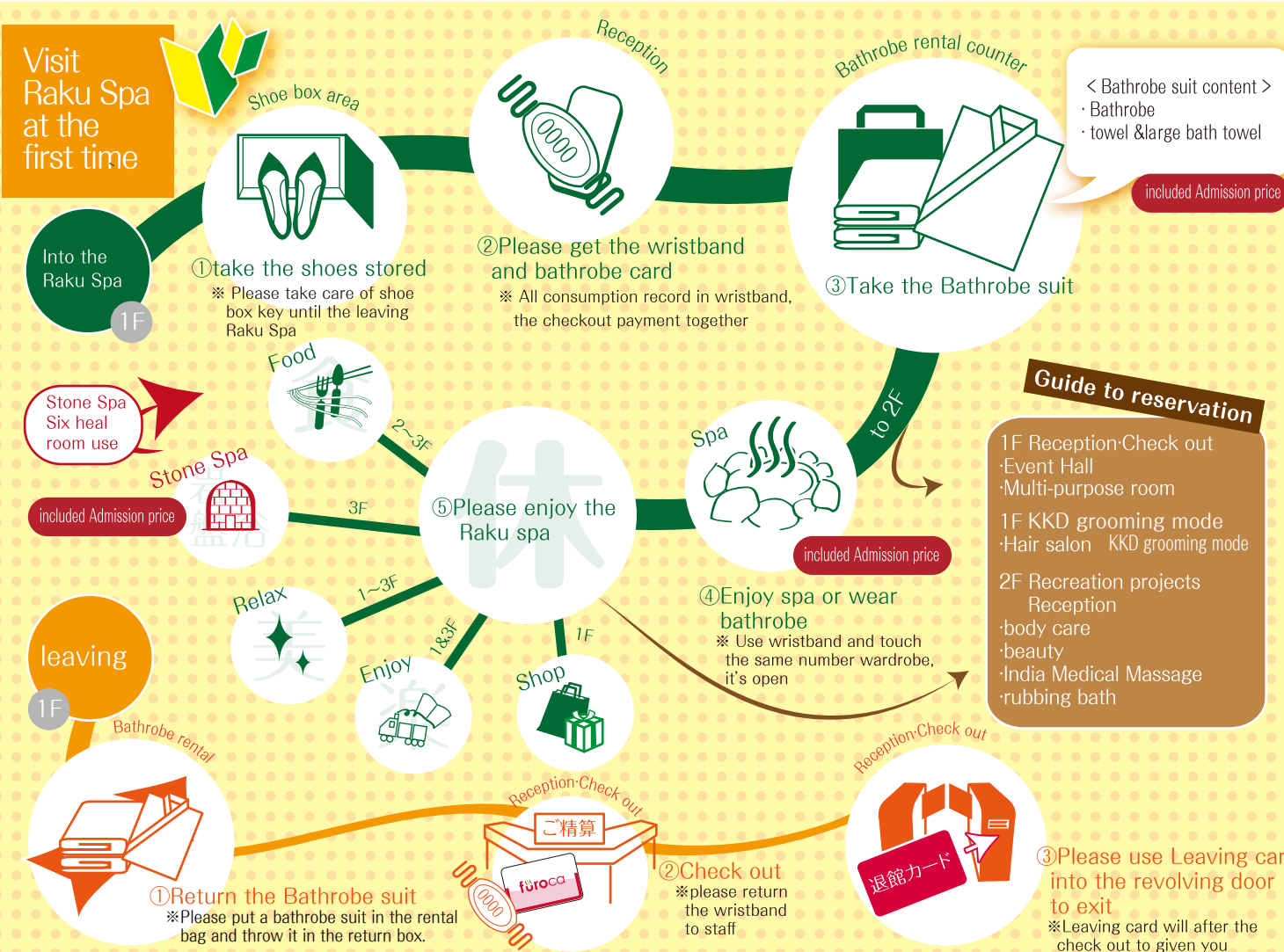


You Tube 極楽湯CHANNEL 配信中!!

rakuspa

search

http://www.rakuspa.com



Stone Spa
Six heal room use

1 We recommend that you enjoy Stone Spa before bathing and add water
※ Please warm up and add water to make the body more fully sweating.

2 When you use Stone Spa, please wear the bathrobe and come to the 3rd floor. Special large towels for Stone Spa are available on the 3rd floor.
※ Only wearing bathrobe enjoy Stone Spa

3 There are six different efficacy rooms, please covered Stone Spa special large towel before lying down
※ To prevent burns and use of health, please cooperate

4 Prohibited the phone in, speak loudly and accounting position and other uncivilized behavior

5 With own physical condition, promptly rest and add water
※ Recommend a Stone Spa rest in once every 20 minutes

< Bathrobe suit content >
· Bathrobe
· towel & large bath towel
included Admission price



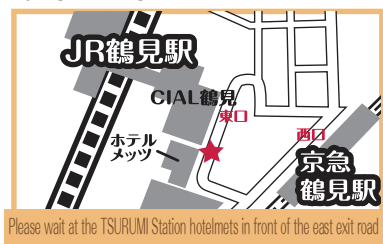
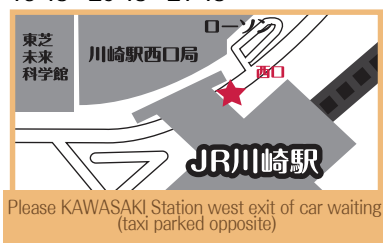
Free shuttle bus

RAKU SPA Times

to KAWASAKI Station	11:30	12:30	13:30	14:30	15:30	16:30
	17:30	18:30	19:30	20:30	21:30	
to TSURUMI Station	12:00	13:00	14:00	15:00	16:00	17:00
	18:00	19:00	20:00	21:00		
to MUSASHIKOSUGI Station	11:30	13:15	14:45	16:15	18:15	19:45

KAWASAKI・TSURUMI・MUSASHIKOSUGI Station Times

KAWASAKI ⇒ RAKU SPA	TSURUMI ⇒ RAKU SPA
09:45 10:45 11:45 12:45 13:45 14:45 15:45 16:45 17:45 18:45 19:45 20:45 21:45	10:15 11:15 12:15 13:15 14:15 15:15 16:15 17:15 18:15 19:15 20:15 21:15



※ There is no Bus stop mark

MUSASHIKOSUGI ⇒ RAKU SPA
10:00 11:30 12:15 14:00 15:30 17:00 19:00 20:30

